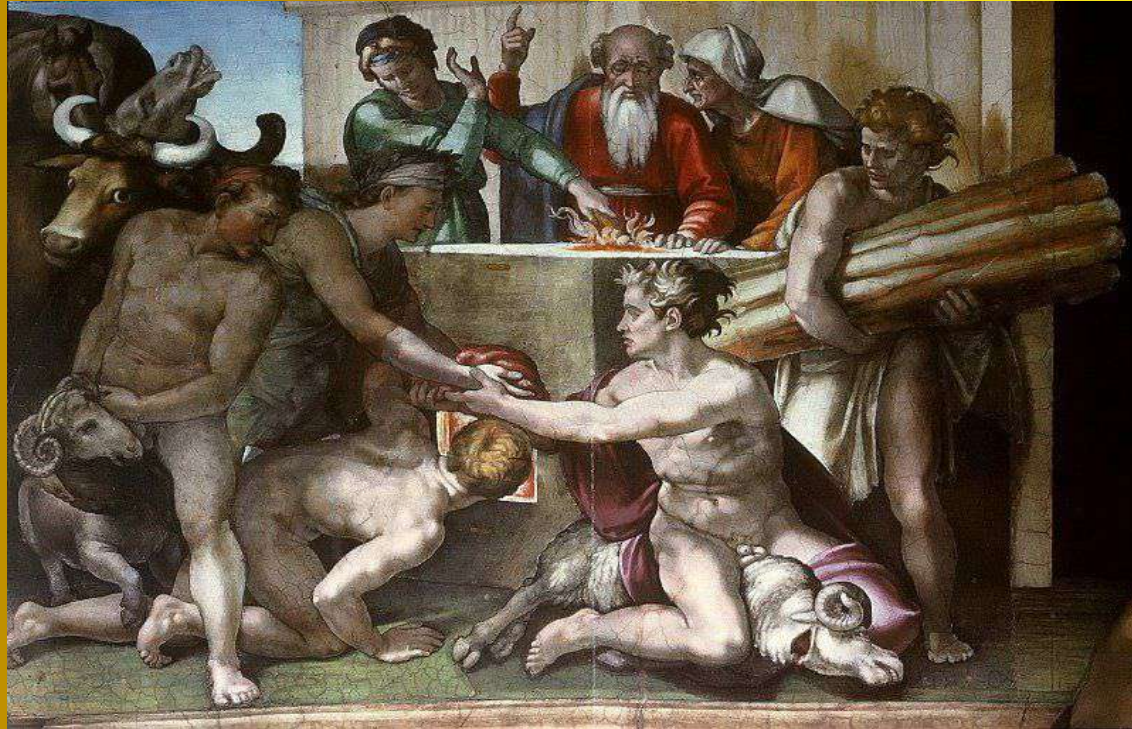


# Paintings of the Sistine Chapel

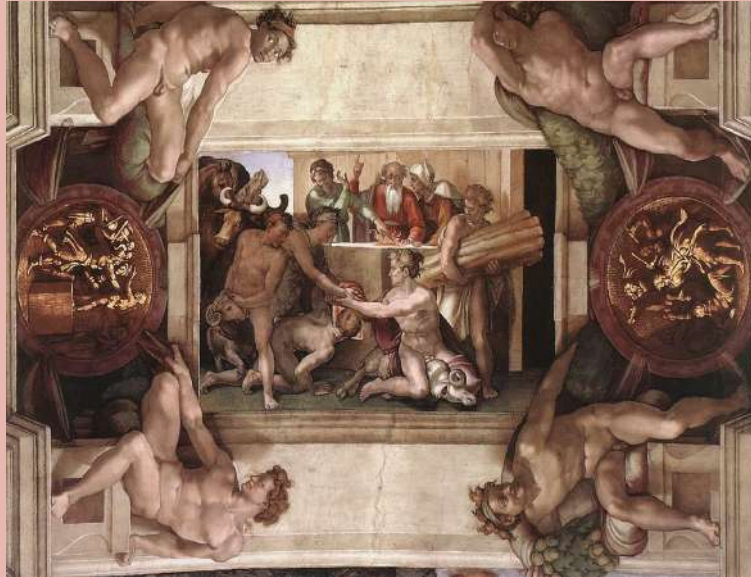


# SELECTED PAINT



# 1-Type of painting

This picture is made of trompe l'oeil and is made on the ceiling of the chapel







## 2-Description

In this photo we can see an elephant, next to him there is a horse and in front of him a bull. Next to these animals there is a naked man who is on top of a goat and on his side there is a man who is shaking hands with a naked man. Opposite him is another naked man looking at a fireplace. Behind the fireplace there is a woman, next to her there is a man who is looking at another man and next to him there is a man picking up some sticks.

## 3- Data

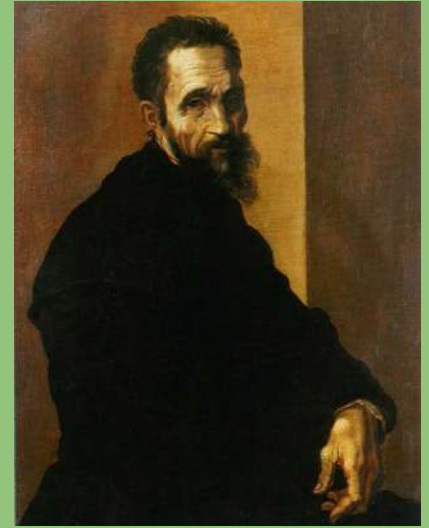
The title of this point is THE SACRIFICE OF NOAH.

It has dimensions of 170 x 260

The year of creation was from 1508 to 1510

This point was created by Michelangelo.

Michelangelo was born in a middle class family bankers in the small village of Caprese. He was an Italian Renaissance sculptor, painter, poet and architect. In the actuality, is considered one of the most influential Western artist of all the times



## 4- Style

- Is realistic.
- The artist paint the people in a realistic way.
- The figure give a sensation of movement.
- The figures are relaxed.
- The figures are well-proportioned but aren't harmonious.
- Yes, the clothes have been painted realistic
- The composition is radial. It isn't harmonious
- The contrasts are not extreme. Yes there is no dark, but very Little.



## 5-Context

The Sacrifice of Noah is one of the nine scenes from Genesis that Michelangelo painted in fresco in the vault of the Sistine Chapel, dating from 1508 to 1510.



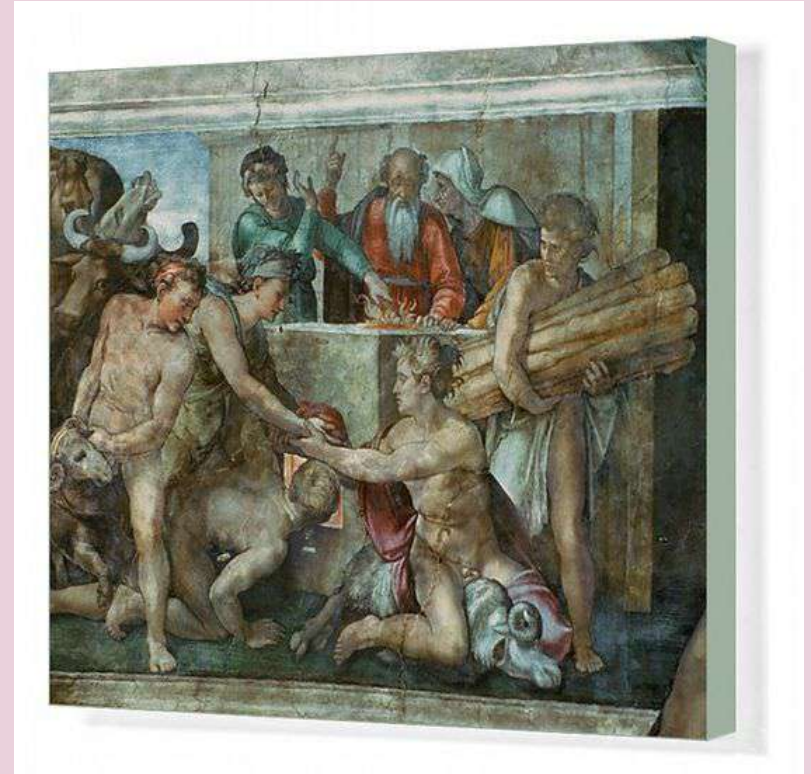
## 6- Function or purpose

Sacrifice of Noah is the seventh of the nine scenes from Genesis.

The painting depicts Noah, his wife and others celebrating a sacrifice of a ram.

There is a pair Ignudi extending their arms toward the centre to grip the ribbon holding up the medal.

Young men are also seen dragging the animal..





# 7- Symbolism

Its theme is the sacrifice that Noah made after the Universal Flood.

Related to the covenant between God and man and considered in biblical exegesis as a prefiguration of the sacrifice of Christ.



## 8- Importance of the painting

Its subject is the sacrifice that Noah made after the Flood, a passage narrated in the Chapter 8, verses 20 to 22, in relation to the covenant between God and man, and counts in the interpretation of the Bible as a foreshadowing of the sacrifice of Christ.



## 9- Personal opinion

In our opinion, we think that it is a painting that does not transmit much tranquility, on the contrary, it transmits anguish to us.

But, we really like the expressiveness and the realism of the characters because they are very successful for the time in which they were made.

